



Smart Sinus Ups

Purpose



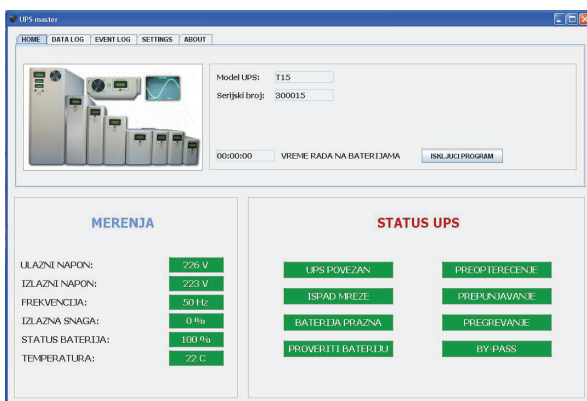
IT sector, offices,
industry, medical, server
rooms...



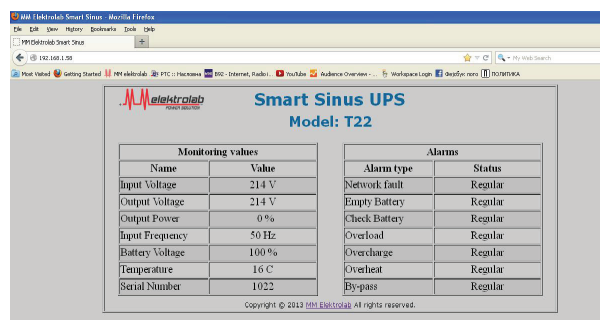
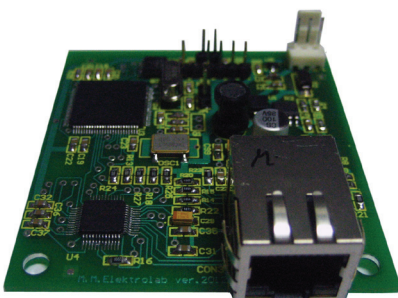
- Pure Sine wave output
- Smart technology
- Real time and calendar
- Super charger (Adjustable battery charger)
- Wide input voltage operation range
- High quality device
- Long lifetime without reparation
- 5 year warranty

DESCRIPTION:

- Smart Sinus Ups is high quality device, generates a pure Sinusoidal voltage at the output 230V~ +/-5%.
- Carefully selected high quality components from well-known manufacturers.
- Super-charger digital adjustable charger, min 9Ah to max 200Ah with IU characteristics and temperature compensation. Easy to add external batteries for extended autonomy.
- Smart technology enables high reliability, fully automated and independent system.
- Long life -UPS life without repairs over 15 years (not applicable for batteries).
- Wide input voltage operation range (min 150V~ - max 290V~ without degrading power).
- Lots of quality protections.
- Saving event+log alarms in real time.
- Unique concept of Service Support, the purchase of our UPS devices gives you special software through which our product is directly connected via the Internet to the service mail of our company.
- Advanced UPS monitoring software that has the unique concept of generating its own local area network between a UPS device and one or more computers / servers.
- In situations where the mains voltage disappears and the battery is discharged or any alarms occur, UPS before shutting down, executes at the same time shutting down operating systems on all computers / servers, then the UPS device shuts off. In the event of a power failure or any alarm, the UPS sends alerts on monitors of all computers.



- An option of installing a LAN card with SNMP and HTTP protocols, which allows real-time monitoring of UPS devices anywhere in the country and abroad.

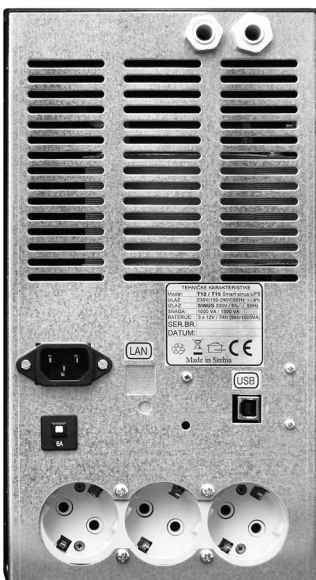


TECHNICAL DATA:

MODEL:	T12	T12b	T15A	T15
Power:	1000 VA 800 W	1000 VA 700 W	1500 VA 1100 W	1500 VA 1100 W
INPUT:				
Nominal Voltage:	230V (min 150V – max 290V without degrading power)			
Frequency:	50Hz +/- 10 %			
OUTPUT:				
Connection:	Schuko CEE7 x 3			
Nominal Voltage:	230V +/- 5 %			
Wave form:	Pure Sine wave			
Frequency:	50Hz +/- 0,01%			
Transfer time:	0 msec			
By-pass:	NO			
Efficiency:	92% (Load=100%)			
Topology:	Double conversion			
PROTECTIONS:				
Protections:	Short circuit at the output / Overload / Overcharge batteries / Deep batteries discharge / Overvoltage-Undervoltage on the UPS Input / Overvoltage-Undervoltage on the UPS Output / Overheating.			
INDICATOR:				
Front panel:	Alfa-numeric display 4x20 character with back light, measurement: -Input/Output voltage, Input frequency, Batteries voltage (V), Charging / Discharging battery %, Output power (VA/%), Work time on batteries, Ups status, Log alarm, Event alarm, Real time-calendar, Charge current battery, Ambiental and Heatsink temperature. -Button On-Off , Parameter setting			
BATTERIES:				
Battery number and model:	12V 9Ah x 3 pcs (36V)	12V Option (long autonomy)	12V/12Ah x 3 pcs (36V)	12V/9Ah x 4 pcs (48V)
Charger:	Digital adjustable, min 9Ah to max 200Ah with IU characteristics and temperature compensation - only if external battery pack is added.			
Expanding work autonomy:	YES (option)			
Charging time:	6-8h			
Autonomy:	5 minutes / 100% output power	Option (long autonomy)	5 minutes / 100% output power	10 minutes / 100% output power
COMMUNICATION:				
Communication:	USB / Option LAN (+Software)			

SAFETY STANDARDS:				
LVD conformity :	EN 60950			
EMC conformity:	EN 62040-2:2006			
DIMENSIONS:				
Height:	32 cm	32 cm	32 cm	32 cm
Widht:	17 cm	17 cm	17 cm	17 cm
Depth:	54 cm	54 cm	54 cm	54 cm
GENERAL:				
Green power:	Yes, adjustable			
Self test battery:	Yes (10-90days and 1-60min adjustable)			
Voltage distortion:	<3%			
Operating temperature range:	Od -20°C do +65°C			
IP class:	IP 21			
Safety mark:	CE			
Weight UPS:	21 kg	16 kg	24 kg	24 kg
WARRANTY:				
Warranty:	Ups 5 years / Battery 2 years			

REAR SIDE UPS:



T12
T12b
T15A
T15

MODEL:	T22	T22b	T25	T30
Power:	2200 VA 1600 W	2000 VA 1400 W	2500 VA 1800 W	3000 VA 2100 W
ULAZ:				
Nominal Voltage:	230V (min 150V – max 290V without degrading power)			
Frequency:	50Hz +/- 10 %			
OUTPUT:				
Connection:	Schuko CEE7 x 3			
Nominal Voltage:	230V +/- 5 %			
Wave form:	Pure Sine wave			
Frequency:	50Hz +/- 0,01%			
Transfer time:	0 msec			
By-pass:	NO			YES, automatically
Efficiency:	92% (Load=100%)			
Topology:	Double conversion			
PROTECTIONS:				
Protections:	Short circuit at the output / Overload / Overcharge batteries / Deep batteries discharge / Overvoltage-Undervoltage on the UPS Input / Overvoltage-Undervoltage on the UPS Output / Overheating.			
INDICATOR:				
Front panel:	Alfa-numeric display 4x20 character with back light, measurement: -Input/Output voltage, Input frequency, Batteries voltage (V), Charging / Discharging battery %, Output power (VA/%), Work time on batteries, Ups status, Log alarm, Event alarm, Real time-calendar, Charge current battery, Ambiantal and Heatsink temperature. -Button On-Off , Parameter setting			
BATTERIES:				
Battery number and model:	12V/12Ah x 4 pcs (48V)	External 24V Option (long autonomy)	12V/9Ah x 10 pcs (24V)	12V/9Ah x 8 pcs (48V)
Charger:	Digital adjustable, min 9Ah to max 200Ah with IU characteristics and temperature compensation - only if external battery pack is added.			
Expanding work autonomy:	NO	YES		
Charging time:	6-8h			
Autonomy:	5 minutes / 100% output power	Option (long autonomy)	15 minutes / 100% output power	10 minutes / 100% output power
COMMUNICATION:				
Communication:	USB / Option LAN (+Software)			

SAFETY STANDARDS:				
LVD conformity :	EN 60950			
EMC conformity:	EN 62040-2:2006			
DIMENSIONS:				
Height:	37 cm	32 cm	39 cm	62 cm
Widht:	17 cm	17 cm	17 cm	17 cm
Depth:	54 cm	54 cm	74 cm	54 cm
GENERAL:				
Green power:	Yes, adjustable			
Self test battery:	Yes (10-90days and 1-60min adjustable)			
Voltage distortion:	<3%			
Operating temperature range:	Od -20°C do +65°C			
IP class:	IP 21			
Safety mark:	CE			
Weight:	36 kg	24 kg	59 kg	64 kg
WARRANTY:				
Warranty:	Ups 5 years / Battery 2 years			

REAR SIDE UPS:

T30



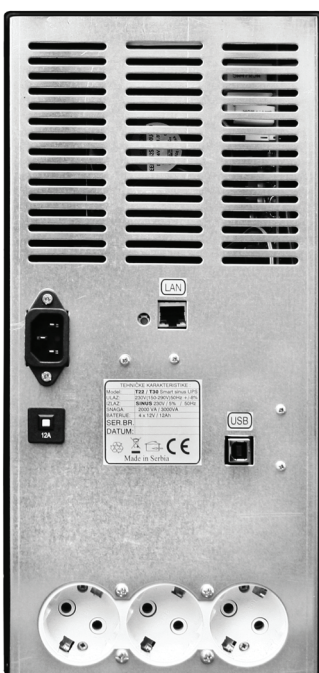
T25



T22b



T22



MODEL:	T32	T52	T52-5h	T52-90m
Power:	3500 VA 2500 W	5000 VA 4000 W	5000 VA 4000 W	5000 VA 4000 W
INPUT:				
Nominal Voltage:	230V (min 150V – max 290V without degrading power)			
Connection:	Schuko	Schuko CEE7 x 3 + Hardwire (1ph+N+G)		
Frequency:	50Hz +/- 10 %			
OUTPUT:				
Connection:	Schuko CEE7x3	Schuko CEE7 x 3 + Hardwire (1ph+N+G)		
Nominal Voltage:	230V +/- 5 %			
Wave form:	Pure Sine wave			
Frequency:	50Hz +/- 0,01%			
Transfer time:	0 msec			
By-pass:	YES, automatically			
Efficiency:	92% (Load=100%)			
Topology:	Double conversion			
PROTECTIONS:				
Protections:	Short circuit at the output / Overload / Overcharge batteries / Deep batteries discharge / Overvoltage-Undervoltage on the UPS Input / Overvoltage-Undervoltage on the UPS Output / Overheating.			
INDICATOR:				
Front panel:	Alfa-numeric display 4x20 character with back light, measurement: -Input/Output voltage, Input frequency, Batteries voltage (V), Charging / Discharging battery %, Output power (VA/%), Work time on batteries, Ups status, Log alarm, Event alarm, Real time-calendar, Charge current battery, Ambient and Heatsink temperature. -Button On-Off , Parameter setting			
BATTERIES:				
Battery number and model:	12V/9Ah x 12pcs (48V)	12V/40Ah x 4pcs (48V)	12V/200Ah x 8pcs (48V)	12V/100Ah x 8pcs (48V)
Charger:	Digital adjustable, min 9Ah to max 200Ah with IU characteristics and temperature compensation - only if external battery pack is added.			
Expanding work autonomy:	Yes (48V)			
Charging time:	6-8h			
Autonomy:	13 minutes / 100% output power	10 minutes / 100% output power	300 minutes / 60% output power	90 minutes / 90% output power
COMMUNICATION:				
Communication:	USB / Option LAN (+Software)			

SAFETY STANDARDS:				
LVD conformity :	EN 60950			
EMC conformity:	EN 62040-2:2006			
DIMENSIONS:				
Height:	62 cm	52 cm	140 cm	132 cm
Widht:	17 cm	22 cm	60 cm	40 cm
Depth:	54 cm	74 cm	100 cm	71 cm
GENERAL:				
Green power:	Yes, adjustable			
Self test battery:	Yes (10-90days and 1-60min adjustable)			
Voltage distortion:	<3%			
Operating temperature range:	Od -20°C do +65°C			
IP class:	IP 21			
Safety mark:	CE			
Weight:	74 kg	105 kg	655 kg	315 kg
WARRANTY:				
Warranty:	Ups 5 years / Battery 2 years			

REAR SIDE UPS:



T32



T52
T52-5h
T52-90m

MODEL:	T62	T82	T82-6h
Power:	6000 VA 4800 W	8000 VA 6400 W	8000 VA 6400 W
INPUT:			
Nominal Voltage:	230V (min 150V – max 290V without degrading power)		
Connection:	Schuko CEE7 x 3 + Hardwire (1ph+N+G)		
Frequency:	50Hz +/- 10 %		
OUTPUT:			
Connection:	Schuko CEE7 x 3 + Hardwire (1ph+N+G)		
Nominal Voltage:	230V +/- 5 %		
Wave form:	Pure Sine wave		
Frequency:	50Hz +/- 0,01%		
Transfer time:	0 msec		
By-pass:	YES, automatically		
Efficiency:	92% (Load=100%)		
Topology:	Double conversion		
PROTECTIONS:			
Protections:	Short circuit at the output / Overload / Overcharge batteries / Deep batteries discharge / Overvoltage-Undervoltage on the UPS Input / Overvoltage-Undervoltage on the UPS Output / Overheating.		
INDICATOR:			
Front panel:	Alfa-numeric display 4x20 character with back light, measurement: -Input/Output voltage, Input frequency, Batteries voltage (V), Charging / Discharging battery %, Output power (VA/%), Work time on batteries, Ups status, Log alarm, Event alarm, Real time-calendar, Charge current battery, Ambient and Heatsink temperature. -Button On-Off , Parameter setting		
BATTERIES:			
Battery number and model:	12V/45Ah x 4pcs (48V)	12V/100Ah x 4pcs (48V)	12V/150Ah x 16pcs (48V)
Charger:	Digital adjustable, min 9Ah to max 200Ah with IU characteristics and temperature compensation - only if external battery pack is added.		
Expanding work autonomy:	Yes (48V)		
Charging time:	6-8h		
Autonomy:	10 minutes / 100% output power	20 minutes / 100% output power	360 minutes / 60% output power
COMMUNICATION:			
Communication:	USB / Option LAN (+Software)		

SAFETY STANDARDS:			
LVD conformity :	EN 60950		
EMC conformity:	EN 62040-2:2006		
DIMENSIONS:			
Height:	52 cm	52 cm	197 cm
Widht:	22 cm	22+22cm	70 cm
Depth:	74 cm	74 cm	75 cm
GENERAL:			
Green power:	Yes, adjustable		
Self test battery:	Yes (10-90days and 1-60min adjustable)		
Voltage distortion:	<3%		
Operating temperature range:	Od -20°C do +65°C		
IP class:	IP 21		
Safety mark:	CE		
Weight:	109 kg	198 kg	816 kg
WARRANTY:			
Warranty:	Ups 5 years / Battery 2 years		

REAR SIDE UPS:

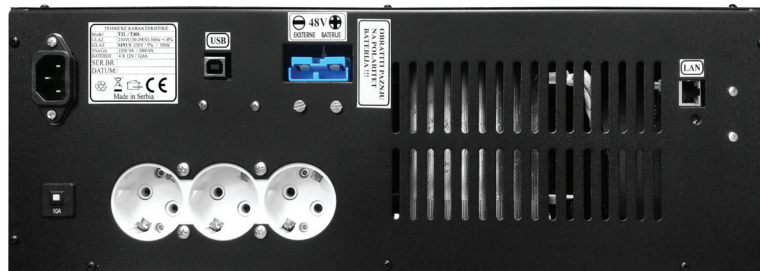


T62
T82
T82-6h

MODEL:	R22	R30	R32
Power:	2200 VA 1600 W	3000 VA 2100 W	3500 VA 2500 W
ULAZ:			
Nominal Voltage:	230V (min 150V – max 290V without degrading power)		
Frequency:	50Hz +/- 10 %		
OUTPUT:			
Connection:	Schuko CEE7x3		
Nominal Voltage:	230V +/- 5 %		
Wave form:	Pure Sine wave		
Frequency:	50Hz +/- 0,01%		
Transfer time:	0 msec		
By-pass:	NO	YES, automatically	
Efficiency:	92% (Load=100%)		
Topology:	Double conversion		
PROTECTIONS:			
Protections:	Short circuit at the output / Overload / Overcharge batteries / Deep batteries discharge / Overvoltage-Undervoltage on the UPS Input / Overvoltage-Undervoltage on the UPS Output / Overheating.		
INDICATOR:			
Front panel:	Alfa-numeric display 4x20 character with back light, measurement: -Input/Output voltage, Input frequency, Batteries voltage (V), Charging / Discharging battery %, Output power (VA/%), Work time on batteries, Ups status, Log alarm, Event alarm, Real time-calendar, Charge current battery, Ambiental and Heatsink temperature. -Button On-Off , Parameter setting		
BATTERIES:			
Battery number and model:	12V/12Ah x 4pcs (48V)	12V/9Ah x 8pcs (48V)	12V/9Ah x 8pcs (48V)
Charger:	Digital adjustable, min 9Ah to max 200Ah with IU characteristics and temperature compensation - only if external battery pack is added.		
Expanding work autonomy:	Yes (48V)		
Charging time:	6-8h		
Autonomy:	5 minutes / 100% output power	10 minutes / 100% output power	5 minutes / 100% output power
COMMUNICATION:			
Communication:	USB / Option LAN (+Software)		

SAFETY STANDARDS:			
LVD conformity :	EN 60950		
EMC conformity:	EN 62040-2:2006		
DIMENSIONS:			
Height:	15 cm	17,5 cm	17,5 cm
Widht:	44/48 cm	44/48 cm	44/48 cm
Depth:	50 cm	60 cm	60 cm
GENERAL:			
Green power:	Yes, adjustable		
Self test battery:	Yes (10-90days and 1-60min adjustable)		
Voltage distortion:	<3%		
Operating temperature range:	Od -20°C do +65°C		
IP class:	IP 21		
Safety mark:	CE		
Weight:	36 kg	58 kg	60 kg
WARRANTY:			
Warranty:	Ups 5 years / Battery 2 years		

REAR SIDE UPS:

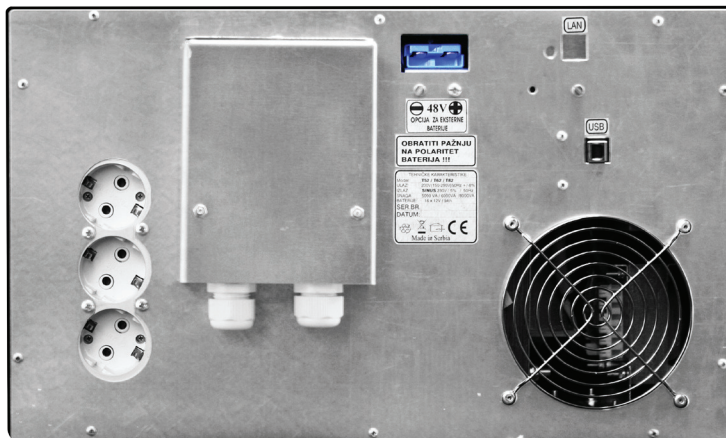


**R22
R30
R32**

MODEL:	R52	R62
Power:	5000 VA 4000 W	6000 VA 4800 W
ULAZ:		
Nominal Voltage:	230V (min 150V – max 290V without degrading power)	
Connection:	Schuko CEE7 x 3 + Hardwire (1ph+N+G)	
Frequency:	50Hz +/- 10 %	
OUTPUT:		
Connection:	Schuko CEE7 x 3 + Hardwire (1ph+N+G)	
Nominal Voltage:	230V +/- 5 %	
Wave form:	Pure Sine wave	
Frequency:	50Hz +/- 0,01%	
Transfer time:	0 msec	
By-pass:	YES, automatically	
Efficiency:	92% (Load=100%)	
Topology:	Double conversion	
PROTECTIONS:		
Protections:	Short circuit at the output / Overload / Overcharge batteries / Deep batteries discharge / Overvoltage-Undervoltage on the UPS Input / Overvoltage-Undervoltage on the UPS Output / Overheating.	
INDIKATOR:		
Front panel:	Alfa-numeric display 4x20 character with back light, measurement: -Input/Output voltage, Input frequency, Batteries voltage (V), Charging / Discharging battery %, Output power (VA/%), Work time on batteries, Ups status, Log alarm, Event alarm, Real time-calendar, Charge current battery, Ambiantal and Heatsink temperature. -Button On-Off , Parameter setting	
BATTERIES:		
Battery number and model:	12V / 9Ah x 16 pcs (48V)	
Charger:	Digital adjustable, min 9Ah to max 200Ah with IU characteristics and temperature compensation - only if external battery pack is added.	
Expanding work autonomy:	Yes (48V)	
Charging time:	6-8h	
Autonomy:	10 minutes / 100% output power	5 minutes / 100% output power
COMMUNICATION:		
Communication:	USB / Option LAN (+Software)	

SAFETY STANDARDS:	
LVD conformity :	EN 60950
EMC conformity:	EN 62040-2:2006
DIMENSIONS:	
Height:	27 cm
Widht:	44/48 cm
Depth:	60 cm
GENERAL:	
Green power:	Yes, adjustable
Self test battery:	Yes (10-90days and 1-60min adjustable)
Voltage distortion:	<3%
Operating temperature range:	Od -20°C do +65°C
IP class:	IP 21
Safety mark:	CE
Weight:	95 kg
WARRANTY:	
Warranty:	Ups 5 years / Battery 2 years

REAR SIDE UPS:



R52
R62

elektrolab
POWER SOLUTION
www.ups-napajanja.rs

Džona Kenedija 11
Beograd - Kaluđerica
Srbija
+381 11 34 13 442
office@mmelektrolab.com